

Year 6 Term 5

Key Questions

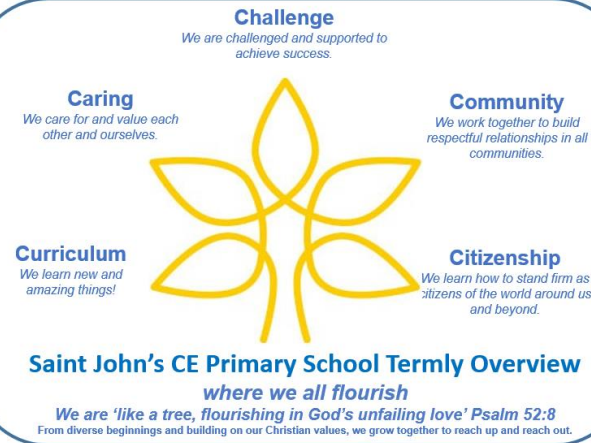
- What makes a hero?: Local history unit
- How has evolution and inheritance shaped living things?

Key Texts

- Letters from the Lighthouse By Emma Carroll
- The Moth by Isabel Thomas

Key Outcomes

- Understanding evolution
- Write a recount/interview and poetry
- A final piece of art using inspiration and learning from other artists



This term's Christian value: **Compassion**

We will consider how we can show this in our school *community*, through *caring* for each other. We will reflect on those who demonstrate these values towards us as well as how we can demonstrate them to others.

Writing and SPAG

We will be looking at The Moth by Isabel Thomas to help us understanding evolution, while also aiding our own poetry. We will also use Emma Carroll's Letters from the Lighthouse to inspire a recount in the style of an interview.

We will also be preparing for SATs (in May) with example questions and papers.

Reading

We will be looking at a range of materials to develop our reading skills; VIPERS:

- Vocabulary
- Inference
- Prediction
- Explanation
- Retrieval
- Summarise

We will also be preparing for SATs (in May) with example questions and papers.

Maths

We will learn about:

- Geometry
- Position and Direction
- Problem Solving using a range of mathematical skills

We will also be preparing for SATs (in May) with example questions and papers.

PHSE/RSE

We will learn about: Keeping Safe

- Think before you click
- To share or not to share
- Drugs
- Alcohol

Computing:

We will be using Tinkercad to learn and develop our skills in 3D modelling:

- Introduction to Tinkercad
- Modifying existing models
- Planning and creating our own 3D models

Art

We will explore painting and mixed media through artist studies:

- David Hockney
- Paula Rego
- Fiona Rae
- Lubaina Himid

Using our studies, we will research, plan and create a final piece of art.

Learning through Locality

We will explore the heroic efforts of the people that remained at home during WW2 and the contribution that they made, with a particular focus on the Cheltenham community.

Outdoor Learning

During our science we will continue with a school field guide showing the species that we have in and around school.

Home Learning

Over the course of the summer term, children are invited to research, develop and create a piece of project work of their choosing that demonstrates what they have learnt about any of the areas that we have investigated.

Enrichment and Partnership

Jazz Concert for Schools.
Big Sing Event
Maths Day and Celebration of Learning

Science

We will learn about evolution and inheritance:

- What is inheritance and how does it drive adaptations?
- What is adaptations and how does this drive evolution?
- How has Darwin has shaped our understanding of evolution?
- Where is the evidence for the theory of evolution?

History

We will be exploring World War 2 with a focus on local history. During this unit we will explore the sacrifices that were made and the heroic work of those that remined at home during the conflict.

- How did WW2 begin?
- How did Cheltenham contribute to the war effort?
- Did Cheltenham suffer the Blitz?
- What were the roles of women during WW2?

R.E.

We will be learning about the concept of the Kingdom of God and trying to understand what Christians feel about Jesus by asking the following question:

For Christians, what kind of king is Jesus?

Music

In partnership with Gloucestershire Music, this term we will be learning to play woodwind instruments. We will have a tutor come into school to teach us how to play the instruments and some woodwind pieces that we can perform.

P.E.

We will develop skills in:

- Athletics
- OAA (Outdoor Adventurous Activity)

MFL

We will learn how to talk about what we wear: Les vêtements (Clothes)

- Recognise and recall items of clothing
- Describe what we are wearing